

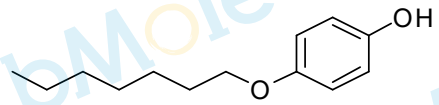
8.859

6.732
6.725
6.715
6.709
6.658
6.652
6.642
6.635

3.842
3.826
3.810

3.334
2.511
2.506
2.502
2.497
2.493
1.665
1.648
1.628
1.378
1.362
1.357
1.338
1.322
1.316
1.307
1.291
1.287
1.271
1.256
1.242
1.235
0.881
0.864
0.847
-0.000

Chemical Formula: C₁₃H₂₀O₂
Molecular Weight: 208.30



CAS: 13037-86-0

DMSO-d₆, 400 MHz

M6394-AC 45594-01

1.00

2.02
2.04

2.03

8.26

2.06

3.12

8

6

4

2

0

PPM